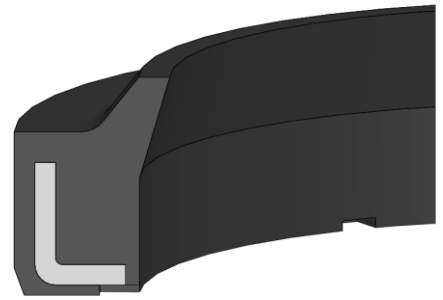


# WIPER AM 45



## DESCRIPTION

**Product group:** Wiper  
**Design:** M metal reinforced  
**Profile no.:** 45  
**Material:** NBR 90, steel acc. to DIN EN 10139

## OPERATIONAL APPLICATION LIMITS

Temperature (°C): -40 to +100  
Running speed (m/s): ≤ 1

## MEDIA

- Hydraulic oils acc. to DIN 51524 Part 1 – 3
- Lubricating oils
- Mineral oil based lubricating greases
- Highly non-flammable hydraulic fluids HFA, HFB, HFC acc. to VDMA 24317

## FUNCTION

The AM 45 is a single-acting wiper. Because it is pressed against the rod, dirt is wiped from the surface by the action of the rod as it retracts. The AM 45 is reinforced by a metal ring which is vulcanized into the elastomer body.

## INSTALLATION

The AM 45 wiper can be installed in an axially accessible housing. The advantage lies in the simple design of the installation housing and practical easy installation, in particular with smaller diameters. Please note that the installation housing has to be designed with light chamfering.

## REMARKS

The metal ring ensures the correct functional fit of the wiper in the installation housing. The metal ring is covered by the elastomer which provides for a correct press fit with an increased sealing effect on the outer circumference.

